

Percentile Ranks and the Integrated Impact Indicator (I3)

Loet Leydesdorff¹ and Lutz Bornmann²

In a brief communication to this journal, entitled “Basic Properties of Both Percentile Rank Scores and the I3 Indicator,” Rousseau (in press) proposed to define percentile classes in the case of the Integrated Impact Indicator (I3) right-open so that the largest number in a set always belongs to the highest percentile. He argued that “this completely solves the issue raised by Leydesdorff & Bornmann (2011) that in the case of small numbers (e.g., reviews), papers would for arithmetic reasons have lower percentile values.”

In Leydesdorff & Bornmann (2011, at p. 2137), we proposed to add 0.9 to the count (i.e., count + 0.9) because otherwise one can expect undesirable effects for datasets smaller than 100. For example, if a journal with many articles publishes only 10 reviews each year, the highest possible percentile of reviews within this set would be the 90th (i.e., 9 of 10) whereas this could be the 99th (i.e., 9.9 of 10) when 0.9 is added to the count. Elaborating on this correction—which has marginal effects for numbers in the set larger than 100—Rousseau proposed more radically to include the citation frequency of the paper under study in the count so that in this example the highest possible rank for a review would always be 100%. In formula format, the counting rule that the percentile is determined by the number of items with lower citation rates than the item under study ($x_i < x ; i = 1, \dots, n$) is replaced with $x_i \leq x ; i = 1, \dots, n$.

¹ University of Amsterdam, Amsterdam School of Communication Research (ASCoR), Klovenierburgwal 48, 1012 CX Amsterdam, The Netherlands; loet@leydesdorff.net.

² Max Planck Society, Administrative Headquarters, Hofgartenstrasse 8, D-80539 Munich, Germany; bornmann@gv.mpg.de.

1
2
3 Since the counting rule employed for computing percentile values is not uniquely determined
4
5 (Hyndman & Fan, 1996; Sheskin, 2011, at pp. 40, 120-122),³ we accepted Rousseau's suggestion
6
7 as a further improvement, implemented it into the program for computing *I3* in Web-of-Science
8
9 data (at <http://www.leydesdorff.net/software/i3>), and began to use it in a recent study (Bornmann
10
11 & Leydesdorff, in press). However, Zhou *et al.* (in preparation) noted inconsistencies in the
12
13 empirical application of Rousseau's revision. For example, if one would have a set of nine
14
15 uncited papers and one with citation, the uncited papers would all be placed in the 90th percentile
16
17 rank. A lowly-cited document set would thus be advantaged when compared with a highly-cited
18
19 one.
20
21
22
23

24
25
26
27 Rousseau (*personal communication*, Dec. 23, 2011) suggested disregarding the zero-counts in
28
29 this case. We followed this suggestion, placed all non-cited items in the zeroth percentile rank,
30
31 and re-analyzed the set of 65 LIS journals (JCR 2009) studied by Leydesdorff & Bornmann
32
33 (2011) in considerable detail. In Table 1, we use the values provided in their Table 4 (at p. 2139)
34
35 for the comparison: 15 journals of LIS are listed with highest values on *I3* (expressed as
36
37 percentages of the sum of *I3*) compared with IFs (2009), total citation, and %*I3* on the bases of
38
39 the six percentile rank classes used by the NSF (National Science Board, 2010; cf. Bornmann &
40
41 Mutz, 2011).
42
43
44
45
46
47

48 **Table 1:** Rankings of 15 LIS journals with highest values on *I3* (expressed as percentages
49 of the sum) compared with *IFs*, total citations, and % *I3*(*6PR*) with different calculation
50 rules for the percentiles.
51
52
53
54
55

56
57 ³ In most cases any differences obtained between the various methods which be employed to identify a score at a
58 specific percentile will be of little or no practical consequence (Sheskin, 2011, at p. 120).
59
60

1
2
3 Table 1 shows the values of % *I3* on the basis of the correction (of + 0.9) proposed by
4
5 Leydesdorff & Bornmann (2011) in column *c*, by Rousseau (in press) in column *d*, and using the
6
7 quantiles without a correction in column *e*. Analogously, columns *f* to *h* show these values for
8
9 using the six percentile ranks (top-1%, 95-99%, 90-95%, 75-90%, 50-75%, and bottom-50%)
10
11 used in the *Science and Engineering Indicators* of the National Science Board (2010).
12
13
14
15
16

17
18 The differences between the quantiles and the correction with +0.9 are only in the second
19
20 decimal of the percentages and negligible ($r = 1.00$; $p < 0.01$; $N = 65$). (This gives some
21
22 confidence that the much smaller differences generated by using different calculation rules for
23
24 quantiles will have no significant effect on rankings using *I3*.) However, the differences with the
25
26 values provided in column *d* based on the normalization suggested by Rousseau (in press) are
27
28 considerable although the correlation coefficient is still high ($r = 0.70$; $p < 0.01$; $N = 65$). For
29
30 example, *JASIST* would lose its first position in this ranking to *The Scientist*, and is now on the
31
32 second position .
33
34
35
36
37
38

39
40 *The Scientist* contained 392 citable items in 2008 and 2009, of which 352 (98.1%) were not cited
41
42 at the time of our download (February 2011). Using Rousseau's counting rule with the
43
44 improvement specified above, the journal obtains a %*I3* of 7.50, which is above the 7.32%
45
46 attributed to *JASIST* (in column *d*). Using quantiles, however, *The Scientist* is rated 33rd with a
47
48 %*I3* of 1.00, and therefore not listed among the top-15 journals in Table 1.⁴ Figure 1 shows the
49
50 distributions when the 40 remaining documents of *The Scientist* (which were cited at least once)
51
52 are rated in the six percentile rank classes comparatively. (The 352 papers with no citations
53
54 would be placed in the lowest category if they were counted in.)
55
56

57
58 ⁴ In the case of six percentile ranks, %*I3*(6PR) in column *g* is 3.90%. *The Scientist* would then be ranked 5th.
59
60

1
2
3
4
5
6 **Figure 1:** The distribution among six percentile rank classes (Bornmann & Mutz, 2011;
7 National Science Board, 2010) for 40 citable documents in *The Scientist* which were cited
8 at least once.
9

10
11 In summary, we regret with hindsight our suggestion to deviate from quantiles (however
12 computed) as a basis for the ranking because Rousseau's contribution makes clear that we may
13 have opened a box of Pandora allowing for generating a parameter space of other possibilities.
14 The mathematical discussion about other possibilities easily obscures our central message that
15 one is not allowed nor does one have to use central tendency statistics for analyzing citation
16 distributions (Seglen, 1992). Nonparametric statistics is available for the measurement and the
17 testing of the statistical significance of differences. Notwithstanding our reservations, we
18 extended the program at <http://www.leydesdorff.net/software/i3> with the three options available;
19 the quantiles without a correction are now the default option.
20
21
22
23
24
25
26
27
28
29
30
31
32
33
34

35 *I3* is an *impact* indicator which can be used as an alternative to parametric statistics such as the
36 ratio of citations over publications (*c/p*) or the *IF* (Rousseau & Leydesdorff, 2011). The
37 advantage is that one accounts for the expected skewness of citation distributions using non-
38 parametric statistics. More recently, both the *SCImago Institutions Rankings* (at
39 http://www.scimagoir.com/pdf/sir_2011_world_report.pdf) and the *Leiden Ranking 2011/2012*
40 (at <http://www.leidenranking.com/ranking.aspx>) used the top-10% most-highly cited papers as an
41 *excellence* indicator (Bornmann & Leydesdorff, 2011).
42
43
44
45
46
47
48
49
50
51
52
53

54 In the case of these excellence indicators, only two percentile rank classes are distinguished for
55 the evaluation (Rousseau, 2011 and in press). Both excellence and impact indicators can be
56
57
58
59
60

1
2
3 tested against expectation or in terms of differences between two ranks using the z -test for
4
5 independent proportions (Bornmann *et al.*, 2011; Leydesdorff & Bornmann, in preparation). In
6
7 short, Rousseau's stated preference to solve problems first mathematically (as in an "ideal gas")
8
9 provided us with an empirically testable hypothesis.
10
11
12
13
14

15 **Acknowledgements**

16 We are grateful to Ronald Rousseau and Ping Zhou for comments and suggestions.
17
18

19 **References**

- 20 Bornmann, L., de Moya-Anegón, F., & Leydesdorff, L. (in press). The new Excellence Indicator
21 in the World Report of the SCImago Institutions Rankings 2011. *Journal of Informetrics*.
22 Retrieved on Dec. 25, 2011 from <http://arxiv.org/abs/1110.2305>.
23
24 Bornmann, L., & Leydesdorff, L. (2011). Which cities produce excellent papers worldwide more
25 than can be expected? A new mapping approach—using Google Maps—based on
26 statistical significance testing. *Journal of the American Society for Information Science*
27 *and Technology*, 62(10), 1954-1962.
28
29 Bornmann, L., & Leydesdorff, L. (in press). Which cities' paper output and citation impact are
30 above expectation in information science? Some improvements of our previous mapping
31 approaches. *Journal of Informetrics*.
32
33 Bornmann, L., & Mutz, R. (2011). Further steps towards an ideal method of measuring citation
34 performance: The avoidance of citation (ratio) averages in field-normalization. *Journal of*
35 *Informetrics*, 5(1), 228-230.
36
37 Hyndman, R. J., & Fan, Y. (1996). Sample quantiles in statistical packages. *American*
38 *Statistician*, 361-365.
39
40 Leydesdorff, L., & Bornmann, L. (2011). Integrated Impact Indicators (I3) compared with
41 Impact Factors (IFs): An alternative design with policy implications. *Journal of the*
42 *American Society for Information Science and Technology*, 62(11), 2133-2146.
43
44 Leydesdorff, L., & Bornmann, L. (in preparation). Testing Differences Statistically with the
45 Leiden Ranking. Retrieved on Dec. 25, 2011 from
46 <http://arxiv.org/ftp/arxiv/papers/1112/1112.4037.pdf>.
47
48 National Science Board. (2010). *Science and Engineering Indicators*. Washington DC: National
49 Science Foundation. Retrieved on Dec. 25, 2011 from
50 <http://www.nsf.gov/statistics/seind10/>.
51
52 Rousseau, R. (2011). Percentile rank scores are congruous indicators of relative performance, or
53 aren't they? Retrieved on Dec. 25, 2011 from
54 <http://arxiv.org/ftp/arxiv/papers/1108/1108.1860.pdf>.
55
56 Rousseau, R. (in press). Basic properties of both percentile rank scores and the I3 indicator.
57 *Journal of the American Society for Information Science and Technology*, doi:
58 10.1002/asi.21684.
59
60 Rousseau, R., & Leydesdorff, L. (2011). Non-consistency, non-cited items, and the impact
61 factor: A consequence of the arithmetic. *ISSI Newsletter*, 7(1), 10-14.

- 1
2
3 Seglen, P. O. (1992). The Skewness of Science. *Journal of the American Society for Information*
4 *Science*, 43(9), 628-638.
5
6 Sheskin, D. J. (2011). *Handbook of Parametric and Nonparametric Statistical Procedures (5th*
7 *Edition)*. Boca Raton, FL: Chapman & Hall/CRC.
8 Zhou, P., Ye, F. Y., & Zhong, Y. (in preparation). Percentage Citation Impact and the Combined
9 Impact Indicator: Another perspective for measuring academic impact.
10
11
12
13
14
15
16
17
18
19
20
21
22
23
24
25
26
27
28
29
30
31
32
33
34
35
36
37
38
39
40
41
42
43
44
45
46
47
48
49
50
51
52
53
54
55
56
57
58
59
60

For Peer Review

Table 1: Rankings of 15 LIS journals with highest values on *I3* (expressed as percentages of the sum) compared with *IFs*, total citations, and % *I3(6PR)* with different calculation rules for the percentiles.

Journal	N of papers (a)	Total citations (b)	% I3 (L&B)* (c)	%I3 (Rousseau)** (d)	% I3 (quantiles) (e)	% I3(6PR) (L&B)* (f)	%I3(6PR) Rousseau** (g)	% I3(6PR) (quantiles) (h)	IF 2009 (i)
<i>J Am Soc Inf Sci Technol</i>	375	1975 [1]	9.72 [1]	7.32 [2]	9.73 [1]	8.63 [1]	8.45 [1]	8.64 [1]	2.300 [7]
<i>Scientometrics</i>	258	1336 [3]	7.23 [2]	5.20 [4]	7.24 [2]	6.37 [2]	6.19 [2]	6.35 [2]	2.167 [10]
<i>J Amer Med Inform Assoc</i>	199	1784 [2]	6.80 [3]	4.53 [5]	6.80 [3]	6.15 [3]	5.79 [3]	6.11 [3]	3.974 [2]
<i>Inform Process Manage</i>	221	921 [4]	6.14 [4]	4.41 [6]	6.14 [4]	4.90 [4]	4.94 [4]	4.92 [4]	1.783 [15]
<i>Inform Management</i>	117	822 [6]	4.01 [5]	2.63 [7]	4.01 [5]	3.35 [5]	3.22 [7]	3.33 [5]	2.282 [8]
<i>Int J Geogr Inf Sci</i>	120	446 [9]	3.14 [6]	2.32 [8]	3.14 [6]	2.55 [6]	2.62 [8]	2.52 [6]	1.533 [17]
<i>MIS Quart</i>	66	847 [5]	2.61 [7]	1.61 [21]	2.61 [7]	2.34 [7]	2.17 [11]	2.32 [7]	4.485 [1]
<i>J Manage Inform Syst</i>	82	496 [8]	2.60 [8]	1.76 [15]	2.60 [8]	2.31 [8]	2.20 [10]	2.28 [8]	2.098 [11]
<i>J Health Commun</i>	90	380 [10]	2.52 [9]	1.80 [14]	2.51 [9]	2.04[10a]	2.02 [14]	2.04 [10a]	1.344 [22]
<i>J Acad Libr</i>	127	252 [19]	2.50 [10]	2.15 [9]	2.51 [10]	2.05 [9]	2.24 [9]	2.06 [9]	1.000 [26]
<i>J Inform Sci</i>	102	355 [13]	2.43 [11]	1.88 [12]	2.43 [11]	1.98 [11]	2.04 [13]	1.99 [12]	1.706 [16]
<i>J Comput-Mediat Commun</i>	108	374 [11]	2.37 [12]	1.89 [11]	2.37 [12]	2.04 [10b]	2.09 [12]	2.04 [10b]	3.639 [3]
<i>J Informetr</i>	66	598 [7]	2.28 [13]	1.49 [24]	2.28 [13]	2.04 [10c]	1.97 [16]	2.03 [11]	3.379 [4]
<i>J Med Libr Assoc</i>	114	248 [20]	2.21 [14]	1.97 [10]	2.21 [14]	1.93 [12]	1.98 [15]	1.94 [13]	0.889 [31]
<i>Telecommun Policy</i>	96	264 [17]	2.15 [15]	1.74 [18]	2.15 [15]	1.80 [13]	1.80 [17]	1.81 [14]	0.969 [27]

* Source: Leydesdorff & Bornmann (2011); ** cf. Rousseau (in press).

1
2
3
4
5
6
7
8
9
10
11
12
13
14
15
16
17
18
19
20
21
22
23
24
25
26
27
28
29
30
31
32
33
34
35
36
37
38
39
40
41
42
43
44
45
46
47
48
49
50
51
52
53
54
55
56
57
58
59
60

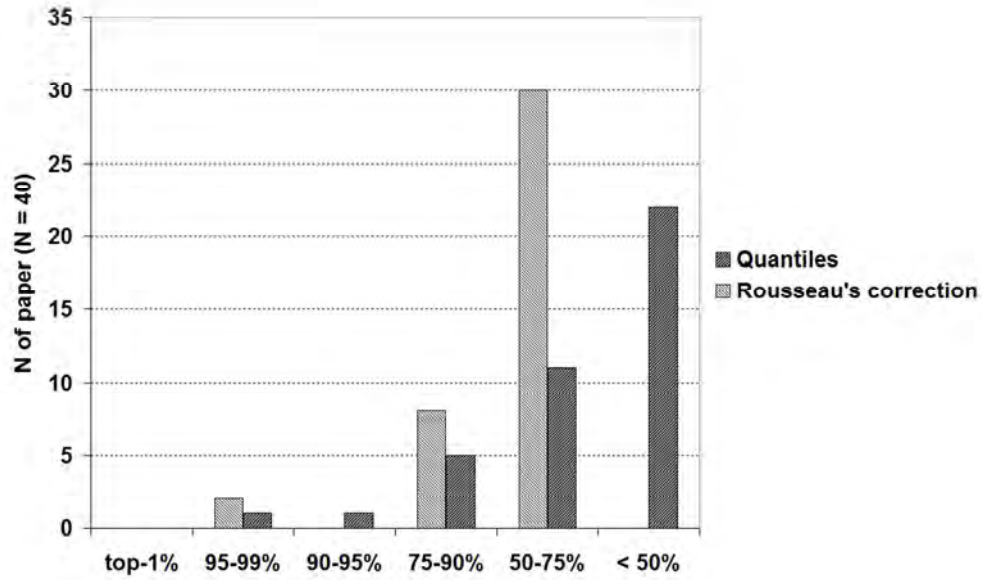


Figure 1: The distribution among six percentile rank classes (Bornmann & Mutz, 2011; National Science Board, 2010) for 40 citable documents in The Scientist which were cited at least once.